



Shipman Road, SE23 | £575,000

02087029444

foresthill@pedderproperty.com

pedder
We live local



In General

- Three double bedrooms
- Period maisonette
- Two Bathrooms
- Wonderful private rear garden
- Bay windows
- Feature fireplace
- Ample storage throughout
- Close to local amenities
- Excellent transport links
- Long lease

In Detail

A lovely three-double-bedroom, two-bathroom period maisonette boasting a spacious and beautiful private garden, situated on the highly desirable Shipman Road in Forest Hill.

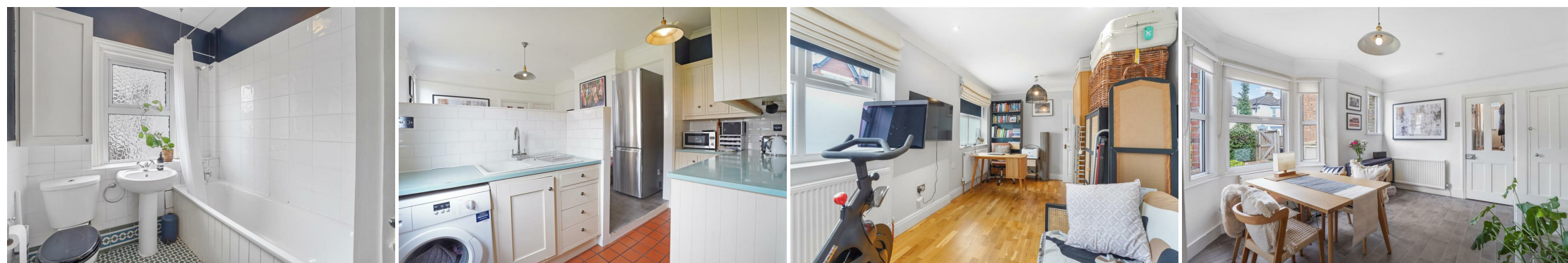
This charming home offers well-balanced and thoughtfully arranged accommodation throughout, comprising three generously sized bedrooms — including a principal bedroom with en-suite — a stylish family bathroom, and a bright and inviting reception room featuring an elegant bay window. The spacious kitchen/diner is perfect for both everyday living and entertaining, with direct access to the impressive private garden.

Further benefits include gas central heating, a long lease, a feature fireplace, excellent built-in storage, and an abundance of natural light that floods the property, creating a warm and welcoming atmosphere.

Located just 0.6 miles from Forest Hill station, the property enjoys excellent transport links to London Bridge, Canada Water, Shoreditch, Whitechapel, Highbury & Islington and many other destinations. It is also within easy walking distance of a wide variety of restaurants, cafés, gastropubs, parks, and well-regarded independent and state schools.

Call the Pedder Forest Hill sales team today to arrange a viewing.

EPC: C | Council Tax Band: C | Lease: 169 years remaining | SC: £0 | GR: Peppercorn | BI: TBC




Floorplan

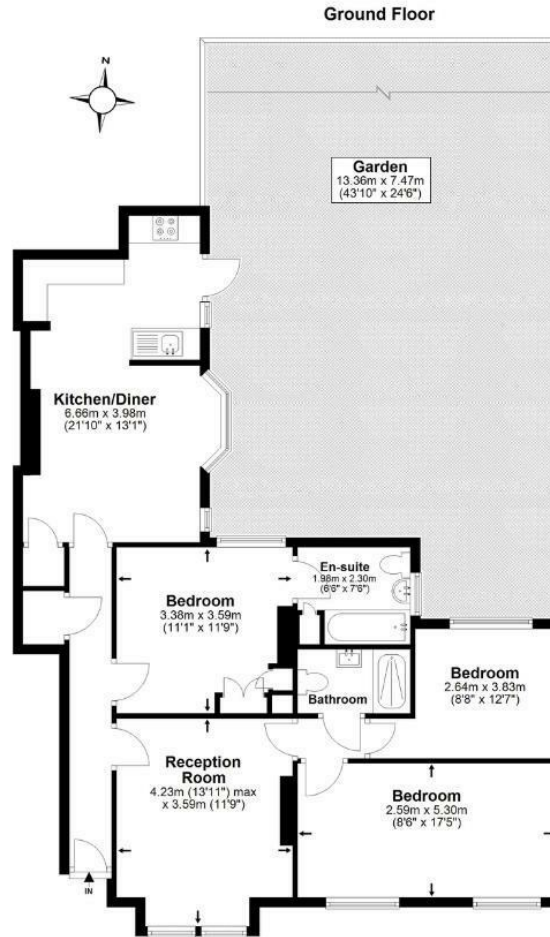
Shipman Road, SE23

Total* = 91.0 sq. m / 979.9 sq. ft

Ground Floor = 91.0 sq. m / 979.9 sq. ft

 = Reduced head room below 1.5m

pedder
We live local



*All measurements are approximate and do not include eaves space. The plans are for representation purposes only as defined by RICS - 'Code of Measurement Practice'. The plans are not to scale. Please personally check all sizes, dimensions, shapes and compass bearings before making any decisions reliant upon them. Copyright The Pedder Group © 2026.

Energy Efficiency Rating		Current	Potential
Very energy efficient - lower running costs			
102 plus) A			
81-101) B			
69-80) C			
55-68) D			
39-54) E			
21-38) F			
1-20) G			
Not energy efficient - higher running costs			
England & Wales		70	76
EU Directive 2002/91/EC			

Pedder Property Ltd trading as Pedder for themselves and for the vendor/landlord of this property whose agents they are, give notice that (1) these particulars do not constitute any part of an offer or contract, (2) all statements contained within these particulars are made without responsibility on the part of Pedder or the vendor/landlord, (3) whilst made in good faith, none of the statements contained within these particulars are to be relied upon as a statement of representation or fact, (4) any intending purchaser/tenant must satisfy him/herself by inspection or otherwise as to the correctness of each of the statements contained within these particulars, (5) the vendor/landlord does not make or give either Pedder or any person in their employment any authority to make or give representation or warranty whatsoever in relation to this property.